

TL071, TL071A, TL071B, TL072 TL072A, TL072B, TL074, TL074A, TL074B LOW-NOISE JFET-INPUT OPERATIONAL AMPLIFIERS

SLOS080C - SEPTEMBER 1978 - REVISED AUGUST 1994

15 DEVICES COVER COMMERCIAL, INDUSTRIAL, AND MILITARY TEMPERATURE RANGES

- Low Power Consumption
- Wide Common-Mode and Differential Voltage Ranges
- Low Input Bias and Offset Currents
- Output Short-Circuit Protection
- Low Total Harmonic Distortion
0.003% Typ
- Low Noise
 $V_n = 18 \text{ nV}/\sqrt{\text{Hz}}$ Typ at $f = 1 \text{ kHz}$
- High Input Impedance . . . JFET Input Stage
- Internal Frequency Compensation
- Latch-Up-Free Operation
- High Slew Rate . . . 13 V/ μs Typ
- Common-Mode Input Voltage Range
Includes V_{CC+}

description

The JFET-input operational amplifiers in the TL07_ series are designed as low-noise versions of the TL08_ series amplifiers with low input bias and offset currents and fast slew rate. The low harmonic distortion and low noise make the TL07_ series ideally suited for high-fidelity and audio preamplifier applications. Each amplifier features JFET inputs (for high input impedance) coupled with bipolar output stages integrated on a single monolithic chip.

The C-suffix devices are characterized for operation from 0°C to 70°C. The I-suffix devices are characterized for operation from -40°C to 85°C. The M-suffix devices are characterized for operation over the full military temperature range of -55°C to 125°C.

AVAILABLE OPTIONS

| T _A | V _{IO} max AT 25°C | PACKAGE | | | | | | | | |
|-------------------|--------------------------------|--------------------------------------|-------------------------|-----------------------|------------------------|-----------------------|-----------------------|--------------------------|------------------------|---------|
| | | SMALL OUTLINE (D) [†] | CHIP CARRIER (FK) | CERAMIC DIP (J) | CERAMIC DIP (JG) | PLASTIC DIP (N) | PLASTIC DIP (P) | TSSOP PACKAGE (PW) | FLAT PACKAGE (W) | |
| 0°C to 70°C | 10 mV | TL071CD | — | — | — | — | — | TL071CP | TL071CPWLE | — |
| | 6 mV | TL071ACD | — | — | — | — | — | TL071ACP | — | — |
| | 3 mV | TL071BCD | — | — | — | — | — | TL071BCP | — | — |
| | 10 mV | TL072CD | — | — | — | — | — | TL072CP | TL072CPWLE | — |
| | 6 mV | TL072ACD | — | — | — | — | — | TL072ACP | — | — |
| | 3 mV | TL072BCD | — | — | — | — | — | TL072BCP | — | — |
| | 10 mV | TL074CD | — | — | — | — | TL074CN | — | TL074CPWLE | — |
| | 6 mV | TL074ACD | — | — | — | — | TL074ACN | — | — | — |
| | 3 mV | TL074BCD | — | — | — | — | TL074BCN | — | — | — |
| -40°C to 85°C | 6 mV | TL071ID | — | — | — | — | — | TL071IP | — | — |
| | | TL072ID | — | — | — | — | — | TL072P | — | — |
| | | TL074ID | — | — | — | — | TL074IN | — | — | — |
| -55°C to 125°C | 6 mV | — | TL071MFK | — | TL071MJG | — | — | — | — | — |
| | 6 mV | — | TL072MFK | — | TL072MJG | — | — | — | — | — |
| | 9 mV | — | TL074MFK | TL074MJ | — | — | — | — | — | TL074MW |

[†] The D package is available taped and reeled. Add the suffix R to the device type (e.g., TL071CDR). The PW package is only available left-ended taped and reeled (e.g., TL072CPWLE).

PRODUCTION DATA information is current as of publication date. Products conform to specifications per the terms of Texas Instruments standard warranty. Production processing does not necessarily include testing of all parameters.



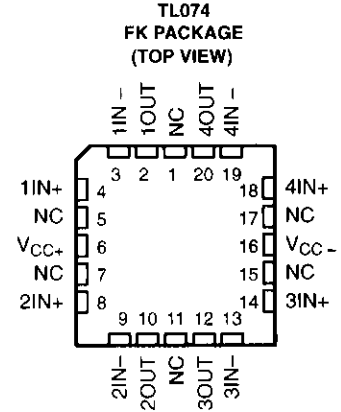
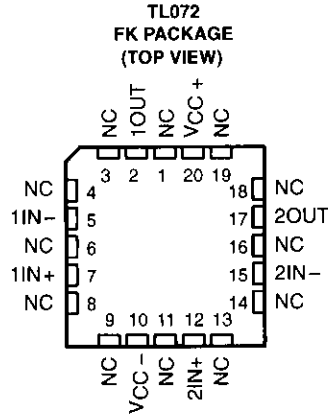
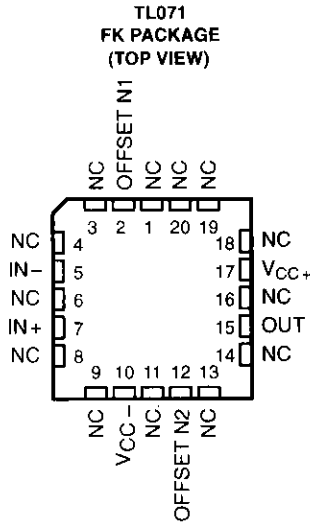
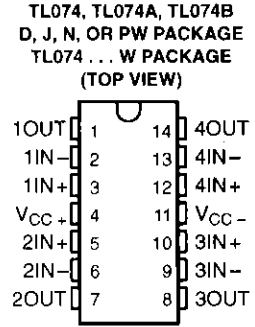
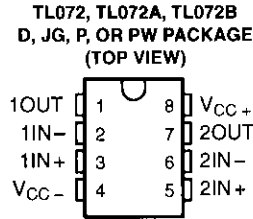
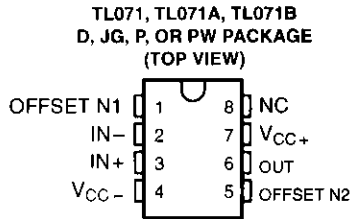
POST OFFICE BOX 655303 • DALLAS, TEXAS 75265

Copyright © 1994, Texas Instruments Incorporated

2-335

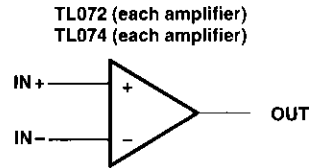
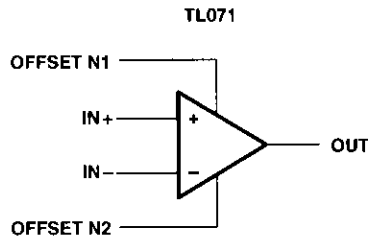
TL071, TL071A, TL071B, TL072 TL072A, TL072B, TL074, TL074A, TL074B LOW-NOISE JFET-INPUT OPERATIONAL AMPLIFIERS

SLOS080C - SEPTEMBER 1978 - REVISED AUGUST 1994



NC - No internal connection

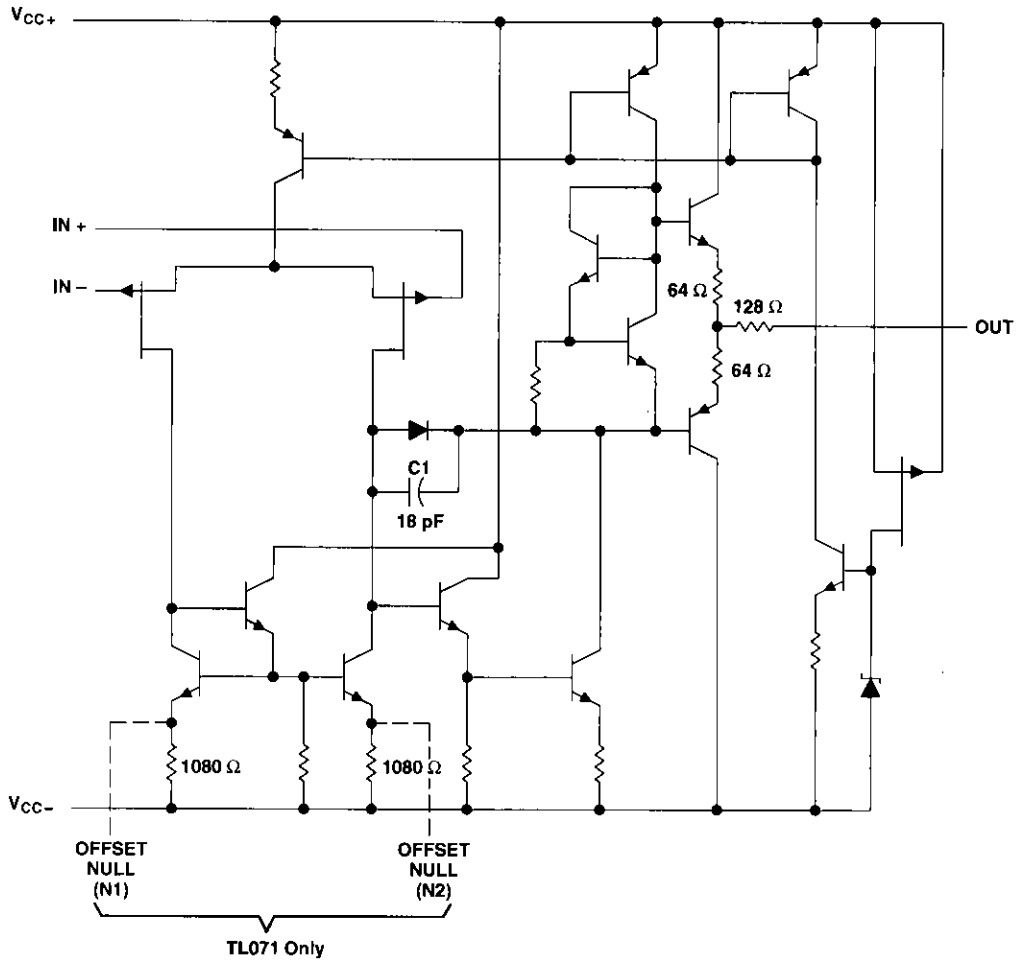
symbols



**TL071, TL071A, TL071B, TL072
TL072A, TL072B, TL074, TL074A, TL074B
LOW-NOISE JFET-INPUT OPERATIONAL AMPLIFIERS**

SLOS080C - SEPTEMBER 1978 - REVISED AUGUST 1994

schematic (each amplifier)



All component values shown are nominal.

| COMPONENT COUNT† | | | |
|------------------|-------|-------|-------|
| COMPONENT TYPE | TL071 | TL072 | TL074 |
| Resistors | 11 | 22 | 44 |
| Transistors | 14 | 28 | 56 |
| JFET | 2 | 4 | 6 |
| Diodes | 1 | 2 | 4 |
| Capacitors | 1 | 2 | 4 |
| epi-FET | 1 | 2 | 4 |

† Includes bias and trim circuitry



POST OFFICE BOX 655303 • DALLAS, TEXAS 75265

2-337

TL071, TL071A, TL071B, TL072 TL072A, TL072B, TL074, TL074A, TL074B LOW-NOISE JFET-INPUT OPERATIONAL AMPLIFIERS

SLOS080C - SEPTEMBER 1978 - REVISED AUGUST 1994

electrical characteristics, $V_{CC\pm} = \pm 15$ V (unless otherwise noted)

| PARAMETER | TEST CONDITIONS† | T _A ‡ | TL071C TL072C TL074C | | | TL071AC TL072AC TL074AC | | | TL071BC TL072BC TL074BC | | | TL071I TL072I TL074I | | | UNIT |
|----------------------------------|---|------------------|----------------------------|-----|-----|-------------------------------|-----|-----|-------------------------------|-----|------------------------|----------------------------|-----|-------|------|
| | | | MIN | TYP | MAX | MIN | TYP | MAX | MIN | TYP | MAX | MIN | TYP | MAX | |
| V _{IO} | V _O = 0, R _S = 50 Ω | 25°C | 3 | 10 | 6 | 3 | 3 | 6 | 2 | 3 | 3 | 3 | 6 | mV | |
| | | Full range | | 13 | 7.5 | | | | | | | | 8 | | |
| α _{VIO} | V _O = 0, R _S = 50 Ω | Full range | 18 | | | 18 | | | 18 | | 18 | | | μV/°C | |
| I _{IO} | V _O = 0 | 25°C | 5 | 100 | 100 | 5 | 100 | 100 | 5 | 100 | 5 | 100 | pA | | |
| | | Full range | | 10 | 2 | | | | | | | | 2 | nA | |
| I _B | V _O = 0 | 25°C | 65 | 200 | 200 | 65 | 200 | 200 | 65 | 200 | 65 | 200 | pA | | |
| | | Full range | | 7 | 7 | | | | | | | | 20 | nA | |
| V _{ICR} | Common-mode input voltage range | 25°C | -12 ±11 to 15 | | | -12 ±11 to 15 | | | -12 ±11 to 15 | | -12 ±11 to 15 | | | V | |
| V _{OM} | Maximum peak output voltage swing | 25°C | ±12 ±13.5 | | | ±12 ±13.5 | | | ±12 ±13.5 | | ±12 ±13.5 | | | V | |
| | | Full range | | | | | | | | | | | | | |
| A _{VD} | Large-signal differential voltage amplification | 25°C | 25 | 200 | | 25 | 200 | | 25 | 200 | 50 | 200 | | V/mV | |
| | | Full range | 15 | | | 25 | | | 25 | | 25 | | | | |
| B ₁ | Unity-gain bandwidth | 25°C | 3 | | | 3 | | | 3 | | 3 | | | MHz | |
| f _i | Input resistance | 25°C | 10 ¹² | | | 10 ¹² | | | 10 ¹² | | 10 ¹² | | | Ω | |
| CMRR | Common-mode rejection ratio | 25°C | 70 | 100 | | 75 | 100 | | 75 | 100 | 75 | 100 | | dB | |
| k _{SVR} | Supply-voltage rejection ratio (ΔV _{CC±} /ΔV _{IO}) | 25°C | 70 | 100 | | 80 | 100 | | 80 | 100 | 80 | 100 | | dB | |
| I _{CC} | Supply current (each amplifier) | 25°C | 1.4 | 2.5 | | 1.4 | 2.5 | | 1.4 | 2.5 | 1.4 | 2.5 | | mA | |
| V _{O1} /V _{O2} | Crosstalk attenuation | 25°C | 120 | | | 120 | | | 120 | | 120 | | | dB | |

† All characteristics are measured under open-loop conditions with zero common-mode voltage unless otherwise specified.

‡ Full range is T_A = 0°C to 70°C for TL07_C, TL07_AC, TL07_BC and is T_A = -40°C to 85°C for TL07_I.

§ Input bias currents of a JFET-input operational amplifier are normal junction reverse currents, which are temperature sensitive as shown in Figure 4. Pulse techniques must be used that will maintain the junction temperature as close to the ambient temperature as possible.



POST OFFICE BOX 655303 • DALLAS, TEXAS 75265

**TL071, TL071A, TL071B, TL072
TL072A, TL072B, TL074, TL074A, TL074B
LOW-NOISE JFET-INPUT OPERATIONAL AMPLIFIERS**
SLOS080C - SEPTEMBER 1978 - REVISED AUGUST 1994

electrical characteristics, $V_{CC\pm} = \pm 15$ V (unless otherwise noted)

| PARAMETER | TEST CONDITIONS† | T_A ‡ | TL071M TL072M | | | TL074M | | | UNIT |
|---|---|------------|------------------|-----------------|-----|----------|-----------------|-----|------------------|
| | | | MIN | TYP | MAX | MIN | TYP | MAX | |
| V_{IO} Input offset voltage | $V_O = 0, R_S = 50 \Omega$ | 25°C | | 3 | 6 | | 3 | 9 | mV |
| | | Full range | | | 9 | | | 15 | |
| α_{VIO} Temperature coefficient of input offset voltage | $V_O = 0, R_S = 50 \Omega$ | Full range | | 18 | | | 18 | | $\mu V/^\circ C$ |
| I_{IO} Input offset current | $V_O = 0$ | 25°C | | 5 | 100 | | 5 | 100 | pA |
| | | Full range | | | 20 | | | 20 | nA |
| I_{IB} Input bias current‡ | $V_O = 0$ | 25°C | | 65 | 200 | | 65 | 200 | pA |
| | | Full range | | | 50 | | | 50 | nA |
| V_{ICR} Common-mode input voltage range | | 25°C | ± 11 | -12 to 15 | | ± 11 | -12 to 15 | | V |
| V_{OM} Maximum peak output voltage swing | $R_L = 10 k\Omega$ | 25°C | ± 12 | ± 13.5 | | ± 12 | ± 13.5 | | V |
| | $R_L \geq 10 k\Omega$ | Full range | ± 12 | | | ± 12 | | | |
| | $R_L \geq 2 k\Omega$ | | ± 10 | | | ± 10 | | | |
| A_{VD} Large-signal differential voltage amplification | $V_O = \pm 10$ V, $R_L \geq 2 k\Omega$ | 25°C | 35 | 200 | | 35 | 200 | | V/mV |
| | | Full range | 15 | | | 15 | | | |
| B_1 Unity-gain bandwidth | $T_A = 25^\circ C$ | | | 3 | | | 3 | | MHz |
| r_i Input resistance | $T_A = 25^\circ C$ | | | 10^{12} | | | 10^{12} | | Ω |
| CMRR Common-mode rejection ratio | $V_{IC} = V_{ICRmin},$ $V_O = 0, R_S = 50 \Omega$ | 25°C | 80 | 86 | | 80 | 86 | | dB |
| k_{SVR} Supply-voltage rejection ratio ($\Delta V_{CC\pm}/\Delta V_{IO}$) | $V_{CC} = \pm 9$ V to ± 15 V, $V_O = 0, R_S = 50 \Omega$ | 25°C | 80 | 86 | | 80 | 86 | | dB |
| I_{CC} Supply current (each amplifier) | $V_O = 0, \text{ No load}$ | 25°C | | 1.4 | 2.5 | | 1.4 | 2.5 | mA |
| V_{O1}/V_{O2} Crosstalk attenuation | $A_{VD} = 100$ | 25°C | | 120 | | | 120 | | dB |

† Input bias currents of a FET-input operational amplifier are normal junction reverse currents, which are temperature sensitive as shown in Figure 4. Pulse techniques must be used that will maintain the junction temperature as close to the ambient temperature as possible.

‡ All characteristics are measured under open-loop conditions with zero common-mode voltage unless otherwise specified. Full range is $T_A = -55^\circ C$ to $125^\circ C$.



**TL071, TL071A, TL071B, TL072
TL072A, TL072B, TL074, TL074A, TL074B
LOW-NOISE JFET-INPUT OPERATIONAL AMPLIFIERS**

SLOS080C – SEPTEMBER 1978 – REVISED AUGUST 1994

operating characteristics, $V_{CC\pm} = \pm 15\text{ V}$, $T_A = 25^\circ\text{C}$

| PARAMETER | TEST CONDITIONS | TL07xM | | | ALL OTHERS | | | UNIT |
|-----------|--|-------------------------------------|-----|-----|------------|-----|-----|------------------------------|
| | | MIN | TYP | MAX | MIN | TYP | MAX | |
| SR | Slew rate at unity gain $V_I = 10\text{ V}$, $C_L = 100\text{ pF}$, $R_L = 2\text{ k}\Omega$, See Figure 1 | 5 | 13 | | 8 | 13 | | $\text{V}/\mu\text{s}$ |
| t_r | Rise time overshoot factor $V_I = 20\text{ mV}$, $C_L = 100\text{ pF}$, See Figure 1 | 0.1 | | | 0.1 | | | μs |
| | | 20% | | | 20% | | | |
| V_n | Equivalent input noise voltage $R_S = 20\ \Omega$ | $f = 1\text{ kHz}$ | | | 18 | | | $\text{nV}/\sqrt{\text{Hz}}$ |
| | | $f = 10\text{ Hz to }10\text{ kHz}$ | | | 4 | | | μV |
| i_n | Equivalent input noise current $R_S = 20\ \Omega$, $f = 1\text{ kHz}$ | 0.01 | | | 0.01 | | | $\text{pA}/\sqrt{\text{Hz}}$ |
| THD | Total harmonic distortion $V_{O(\text{RMS})} = 10\text{ V}$, $R_L \geq 2\text{ k}\Omega$, $R_S \leq 1\text{ k}\Omega$, $f = 1\text{ kHz}$ | 0.003% | | | 0.003% | | | |

PARAMETER MEASUREMENT INFORMATION

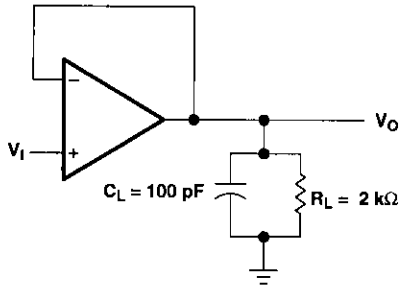


Figure 1. Unity-Gain Amplifier

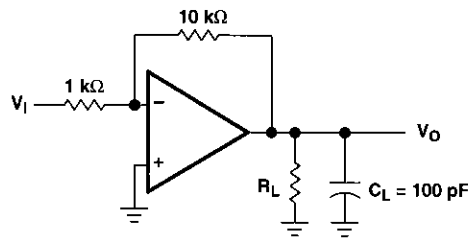


Figure 2. Gain-of-10 Inverting Amplifier

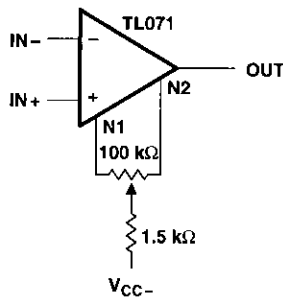


Figure 3. Input Offset Voltage Null Circuit

**TL071, TL071A, TL071B, TL072
 TL072A, TL072B, TL074, TL074A, TL074B
 LOW-NOISE JFET-INPUT OPERATIONAL AMPLIFIERS**

SLOS080C - SEPTEMBER 1978 - REVISED AUGUST 1994

TYPICAL CHARACTERISTICS

Table of Graphs

| | | | FIGURE |
|----------|---|-----------------------------|-------------------------|
| I_{IB} | Input bias current | vs Free-air temperature | 4 |
| V_{OM} | Maximum output voltage | vs Frequency | 5, 6, 7 |
| | | vs Free-air temperature | 8 |
| | | vs Load resistance | 9 |
| | | vs Supply voltage | 10 |
| A_{VD} | Large-signal differential voltage amplification | vs Free-air temperature | 11 |
| | | vs Frequency | 12 |
| | Phase shift | vs Frequency | 12 |
| | Normalized unity-gain bandwidth | vs Free-air temperature | 13 |
| | Normalized phase shift | vs Free-air temperature | 13 |
| CMRR | Common-mode rejection ratio | vs Free-air temperature | 14 |
| | | | |
| I_{CC} | Supply current | vs Supply voltage | 15 |
| | | vs Free-air temperature | 16 |
| P_D | Total power dissipation | vs Free-air temperature | 17 |
| | | Normalized slew rate | vs Free-air temperature |
| V_n | Equivalent input noise voltage | vs Frequency | 19 |
| THD | Total harmonic distortion | vs Frequency | 20 |
| | | Large-signal pulse response | vs Time |
| V_O | Output voltage | vs Time | 22 |

**TL071, TL071A, TL071B, TL072
TL072A, TL072B, TL074, TL074A, TL074B**
LOW-NOISE JFET-INPUT OPERATIONAL AMPLIFIERS
SLOS080C - SEPTEMBER 1978 - REVISED AUGUST 1994

TYPICAL CHARACTERISTICS†

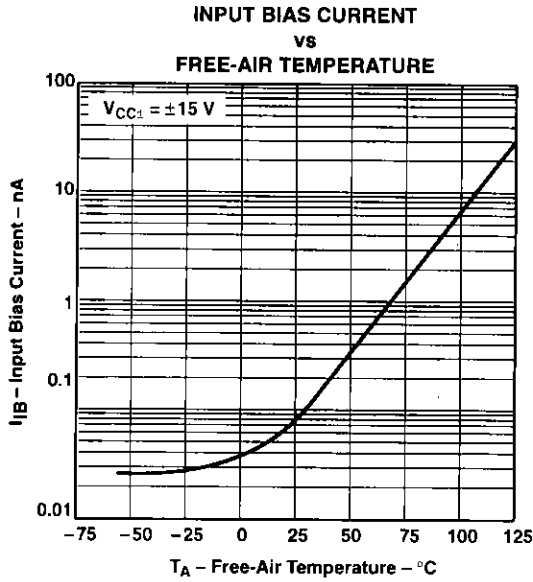


Figure 4

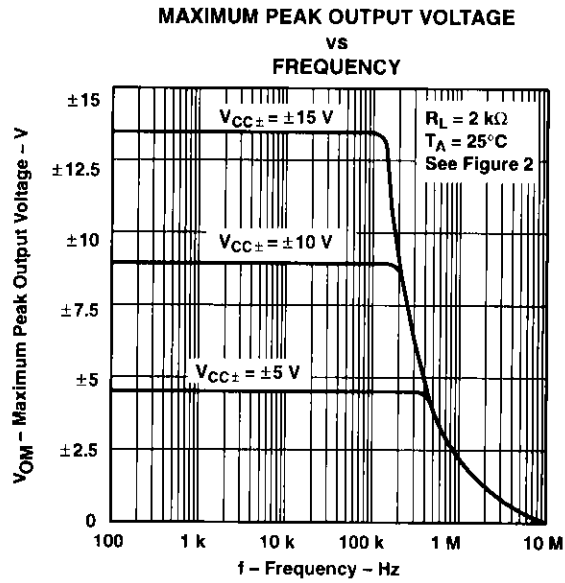


Figure 5

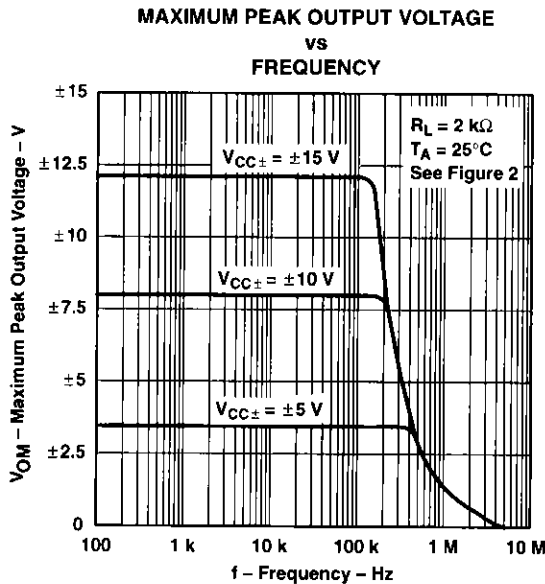


Figure 6

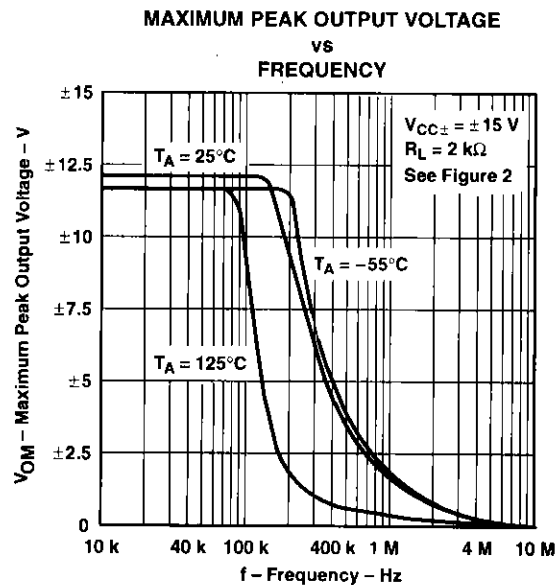


Figure 7

† Data at high and low temperatures are applicable only within the rated operating free-air temperature ranges of the various devices.

**TL071, TL071A, TL071B, TL072
TL072A, TL072B, TL074, TL074A, TL074B**

SLOS080C - SEPTEMBER 1978 - REVISED AUGUST 1994

TYPICAL CHARACTERISTICS†

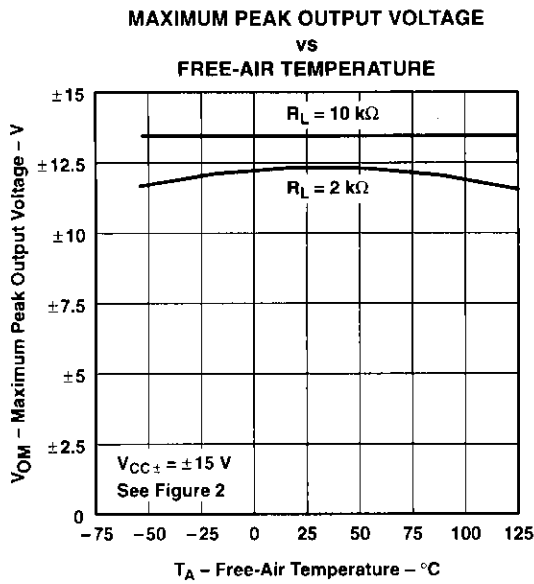


Figure 8

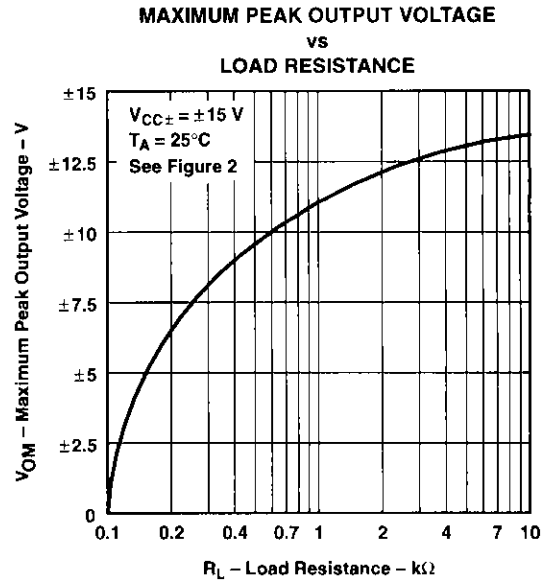


Figure 9

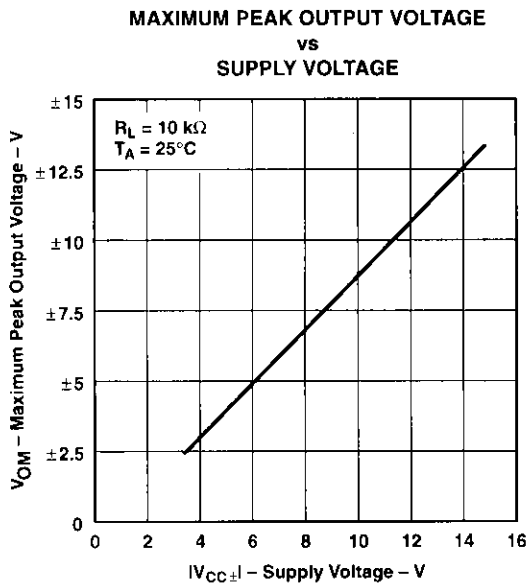


Figure 10

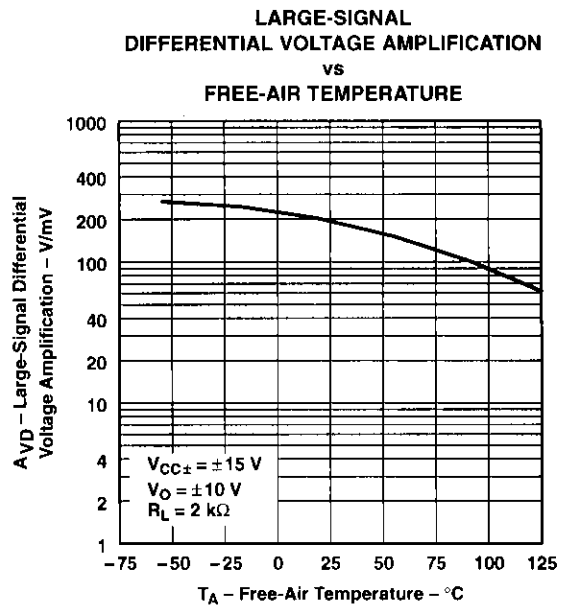


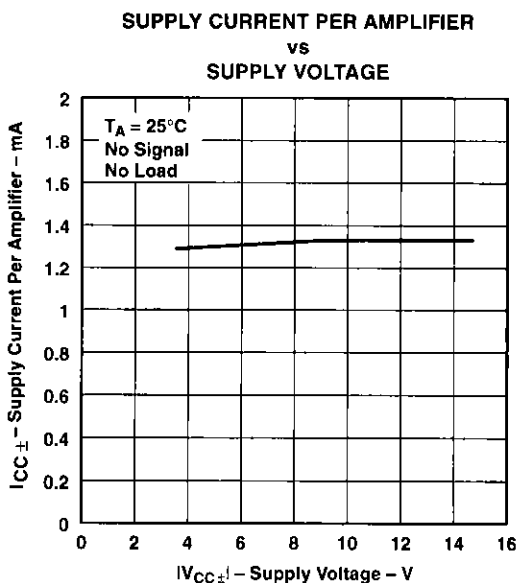
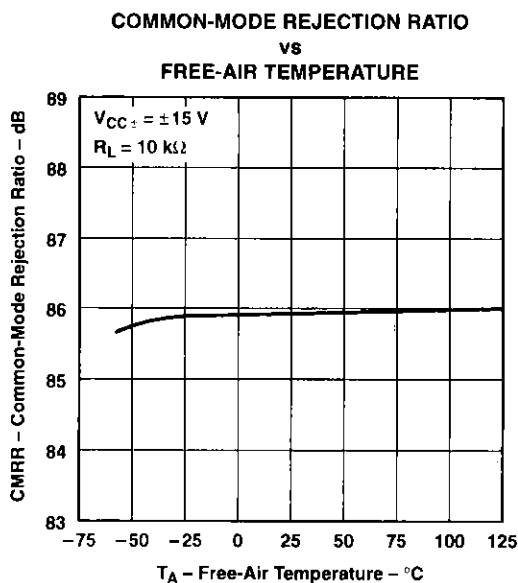
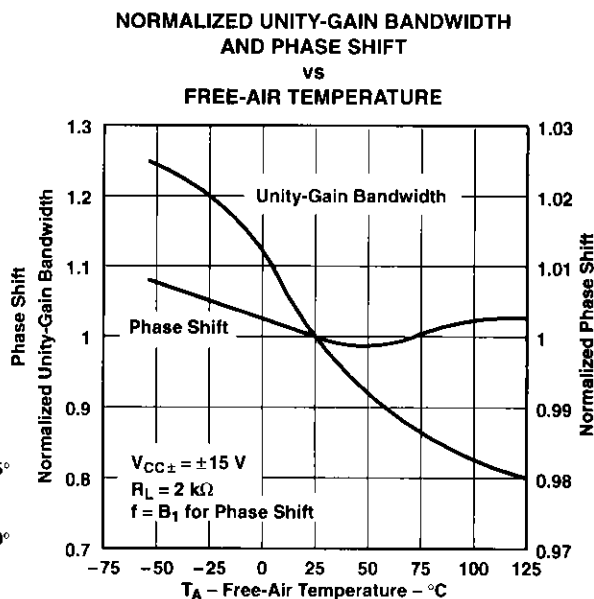
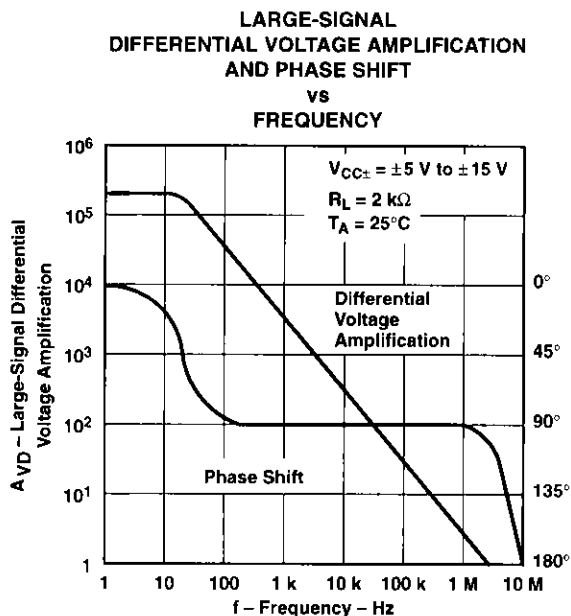
Figure 11

† Data at high and low temperatures are applicable only within the rated operating free-air temperature ranges of the various devices.



POST OFFICE BOX 655303 • DALLAS, TEXAS 75265

TYPICAL CHARACTERISTICS†



† Data at high and low temperatures are applicable only within the rated operating free-air temperature ranges of the various devices.

TL071, TL071A, TL071B, TL072
TL072A, TL072B, TL074, TL074A, TL074B
LOW-NOISE JFET-INPUT OPERATIONAL AMPLIFIERS
 SLOS080C – SEPTEMBER 1978 – REVISED AUGUST 1994

TYPICAL CHARACTERISTICS†

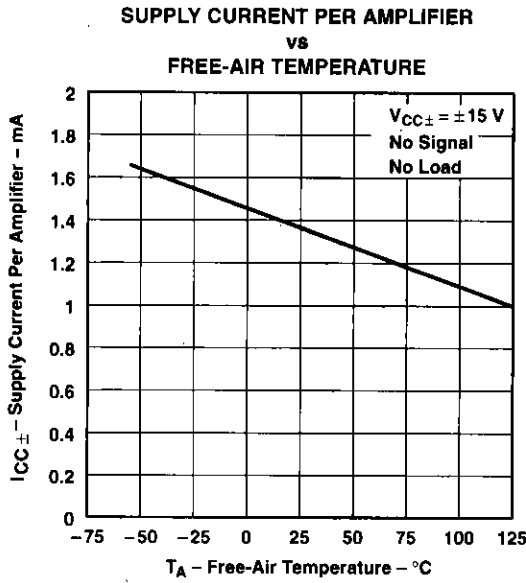


Figure 16

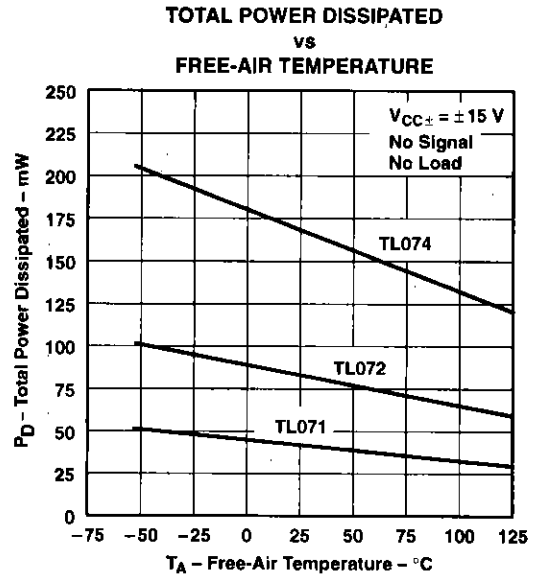


Figure 17

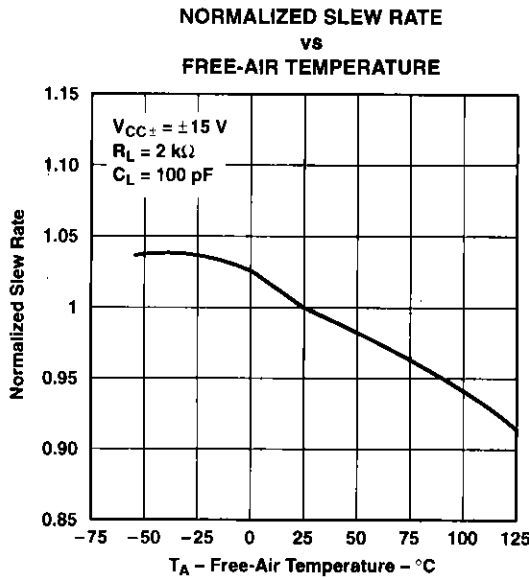


Figure 18

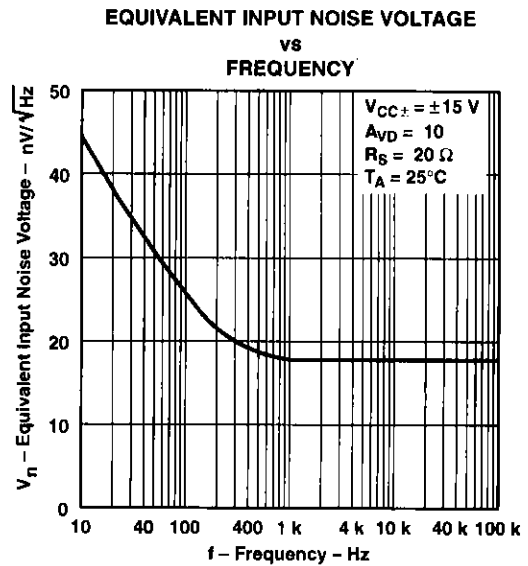


Figure 19

† Data at high and low temperatures are applicable only within the rated operating free-air temperature ranges of the various devices.



TYPICAL CHARACTERISTICS

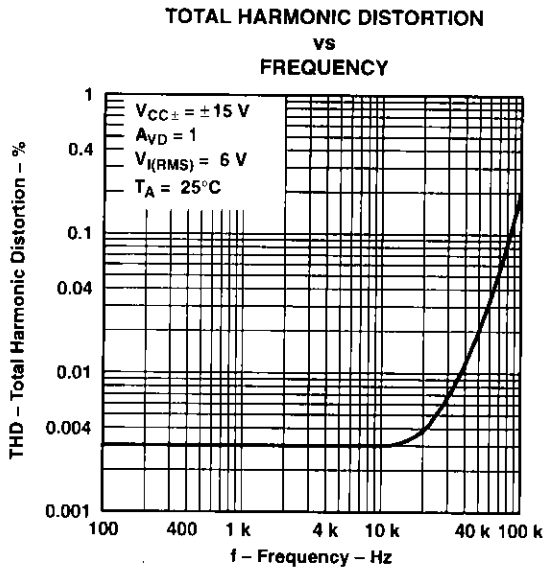


Figure 20

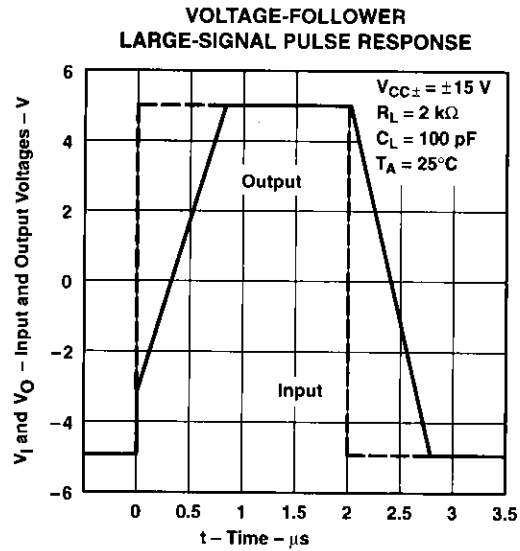


Figure 21

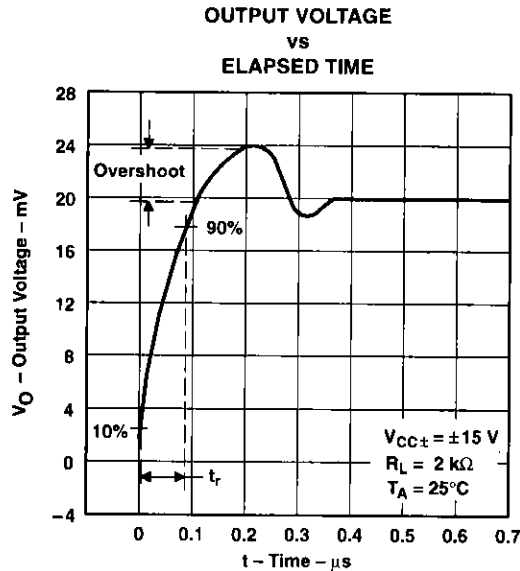


Figure 22

APPLICATION INFORMATION

Table of Application Diagrams

| APPLICATION DIAGRAM | PART NUMBER | FIGURE |
|-------------------------------|-------------|--------|
| 0.5-Hz square-wave oscillator | TL071 | 23 |
| High-Q notch filter | TL071 | 24 |
| Audio-distribution amplifier | TL074 | 25 |
| 100-kHz quadrature oscillator | TL072 | 26 |
| AC amplifier | TL071 | 27 |

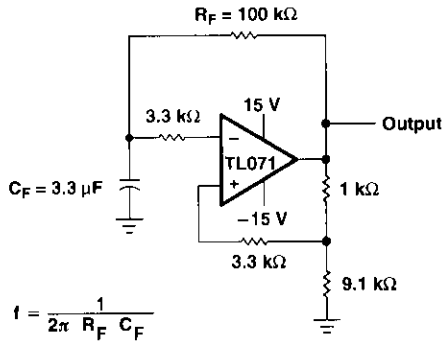


Figure 23. 0.5-Hz Square-Wave Oscillator

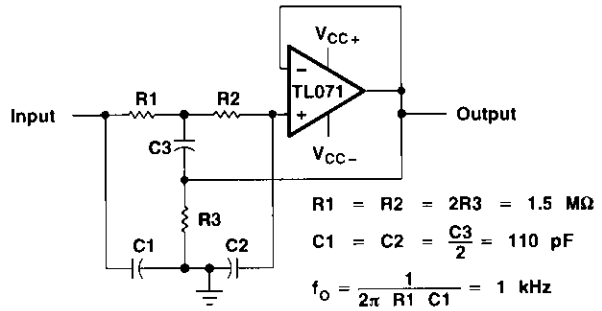


Figure 24. High-Q Notch Filter

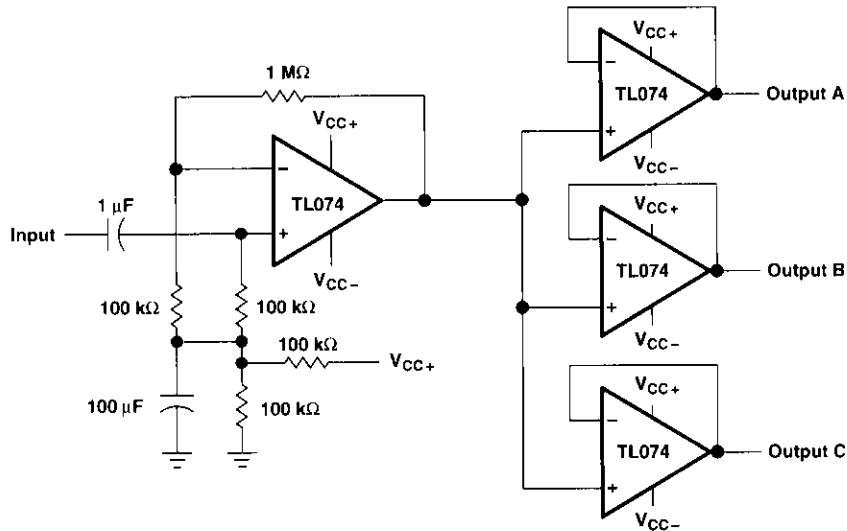
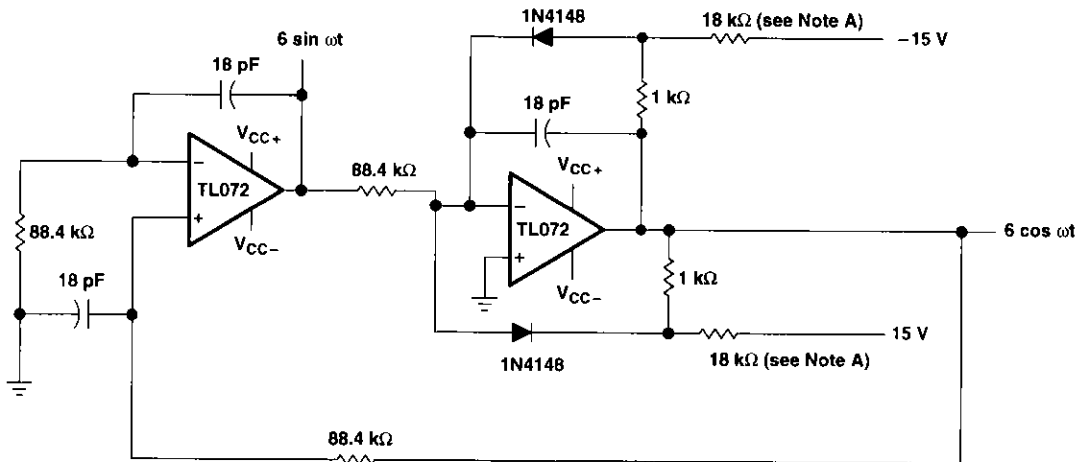


Figure 25. Audio-Distribution Amplifier

APPLICATION INFORMATION



NOTE A: These resistor values may be adjusted for a symmetrical output.

Figure 26. 100-kHz Quadrature Oscillator

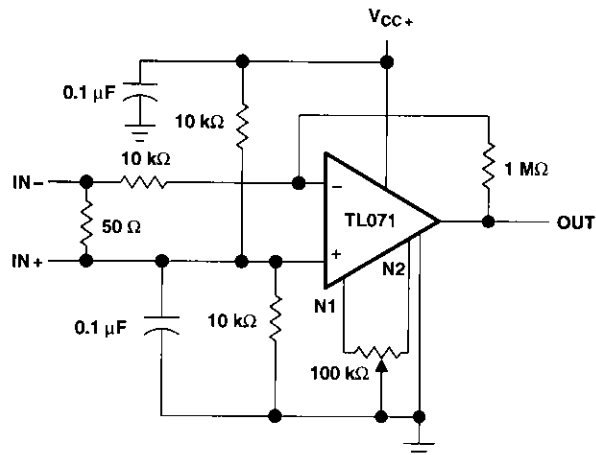


Figure 27. AC Amplifier

ご 注 意

日本テキサス・インスツルメンツ株式会社（以下TIといいます）は、通知をすることなくその製品を変更し、もしくは半導体集積回路製品またはサービスの製造または提供を中止することがありますので、お客様は、発注される前に、これから参照しようとする資料が最新のものであることを確実にするため、最新版の資料を取得するようお勧めします。

TIは、その半導体集積回路製品および関連するソフトウェアが、TIの標準保証条件に従い販売の際の現行の仕様書に対応した性能を有していることを保証します。検査およびその他の品質管理技法は、TIが当該保証を支援するのに必要とみなす範囲で行なわれております。各デバイスの全てのパラメーターに関する特定の検査は、政府がそれ等の実行を義務づけている場合を除き、必ずしも行なわれておりません。

半導体集積回路製品を使用する或る種の用途の中には、死亡、傷害、または財産もしくは環境に深刻な被害をもたらす危険の可能性を包含するものがあります。(以下、これらを「重大用途」といいます。)

TIの半導体集積回路製品は、生命維持の用途、装置、システム、その他の重大用途に使用できるように設計も、意図も、承認も、また保証もされておられません。

TIの製品を当該重大用途に組込むことは、お客様独自のリスクでなされることと解釈されます。TI製品を当該用途に使用される場合は、事前にTIの役員の書面による承諾を必要とします。危険な可能性を有する用途に関する質問は、TIの営業所を通じて、TI迄お寄せ下さい。

お客様の用途にTI製品を使用する際は、TIが当該TI製品のために作成した仕様書をよくご理解頂いて、それに従った使用をして頂くことが必要です。

お客様の用途にTI製品を使用することに伴う危険を最小のものとするため、製品固有の危険性(一例として、TIは、その製品について、品質・信頼性向上の努力はしておりますが、ある確率で故障が発生することは避けられません。)もしくは組み合わせによって起りうる危険性を最小にするための、適切な設計上および作動する上での安全対策(延焼対策、過電流防止対策、二重安全装置その他の対策)は、お客様がとらなくてはなりません。

TIは製品の使用用途に関する支援、お客様の製品の設計、ソフトウェアの性能、または特許侵害もしくはサービスに対する責任を負うものではありません。またTIは、その半導体集積回路製品もしくはサービスが使用されうる、もしくは使用されている組み合わせ、機械装置、もしくは方法をカバーしている、またはそれ等に関連している特許権、著作権、回路配置利用権、その他の知的財産権に基づいて何らかのライセンスを許諾するということは明示的にも黙示的にも保証も表示もしておりません。

版權所有 ©1995

日本テキサス・インスツルメンツ株式会社